

# A+Fine SQ 27 DIN Type Pressure Switch Operation Manual



Before installation, please refer to this operation instruction to familiar with all features of pressure switch. Thanks for your patronage in FineTek products

## INSTALLATION GUIDE

1. Avoid dropping or hitting during installation.
2. Make sure the wires are secured.
3. Ip65 is proofed only with cover protection.
4. Regular inspection on pressure and signal is recommended if used in safety switch function.
5. Before usage, please check if power and voltage are normal
6. Don't use in air and fluid that tend to clog with viscosity.
7. Don't use in ambient temperature over 100°C(212°F).  
(Please refer to the membrane temperature in product spec)

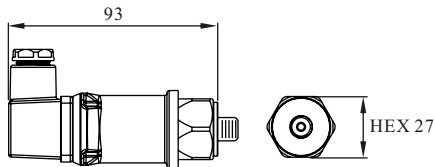
## FEATURES

- Well-operated even under harsh environment
- Options in housing material (all kinds of steel)
- Options in contact material (Silver / Gold)
- Output options in terminals and plug contact
- Cost-effective with high performance
- User-friendly in pressure set-up

## APPLICATIONS

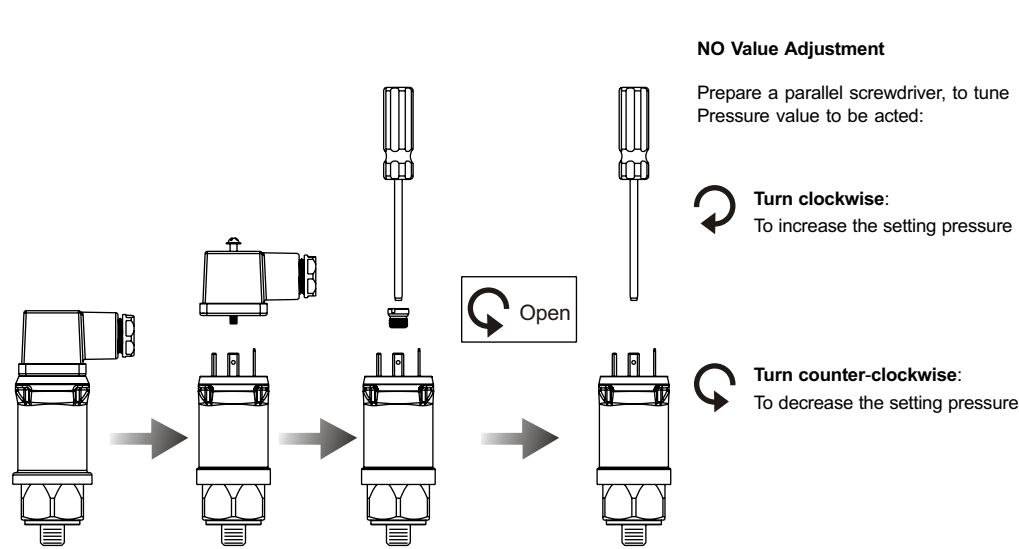
Machinery, lubricate piping, engine system, ventilation, refrigerate industry, automatic, ship-building industry, petrochemicals, food industry, processes control, water treatment and etc.

## DIMENSION



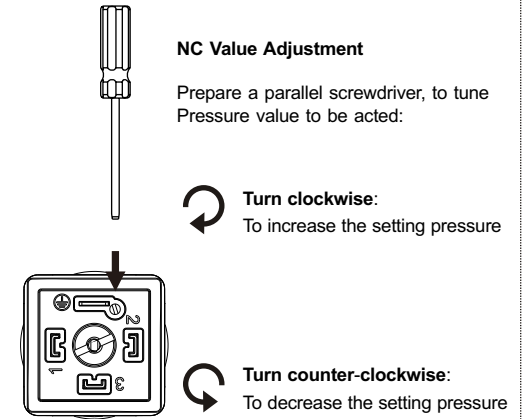
M10*1 taper	9mm	M12*1.5	12mm
M10		G 1/4"	
G 1/8"		PT 1/4"	
PT 1/8"		NPT 1/4"	

## TERMINAL TYPES



PS : It is suggested to seal the screw with glue to fix the Tuning position to avoid changing of pressure value due to long-term operation.

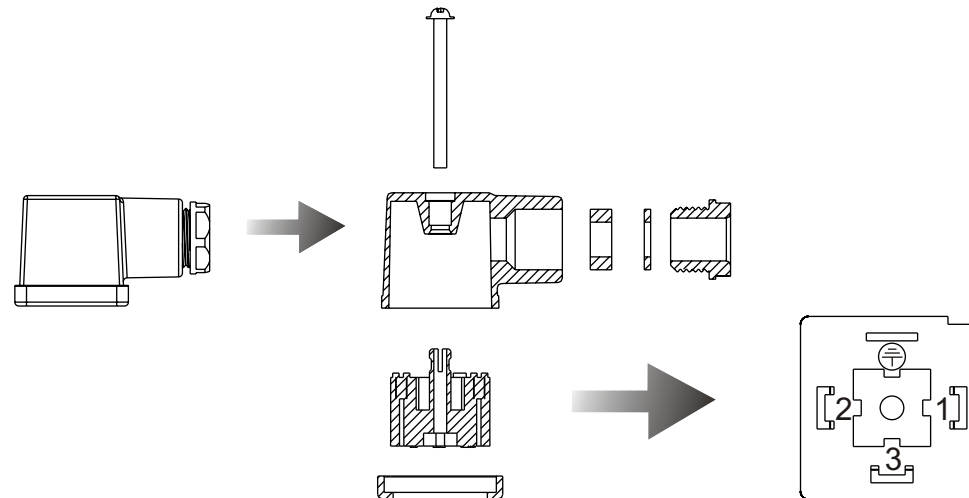
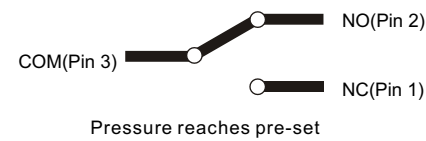
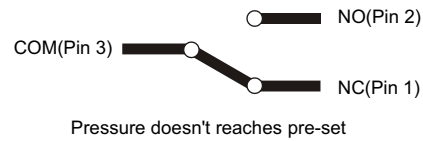
## NC Value Adjustment



PS :

- Suggested adjustment range of NC is 30~50% of NO value. Please don't go beyond this range to avoid damage on the switch.
- Due to pressure attack or long hours working, the screw inside the pressure switch might become loose, and as a result, the setup pressure value might be changed. To avoid this problem, it is suggested to apply glue on the screw after adjusting the pressure value setting.

## ILUSTRATION OF CONTACT MODEL



## SPECIFICATIONS

- Material: Iron (Yellow Zinc Plated), SUS316, Brass
- Operating Voltage/Contact (Max.): 2A/ 50Vdc, 4A/ 250Vac (UL508)
- Voltage Isolation: 300Volt
- Response Frequency: 2Hz
- Max. Voltage Peak: 1.5KV
- Electrical Connection: Socket type
- Membrane Materials/Operation Temp.:  
NBR (Standard) -10~100°C  
VITON -10~100°C  
EPDM -10~100°C  
NBR(Low Temp.) -30~100°C  
VITON(Low Temp.) -30~100°C  
EPDM(Low Temp.) -30~100°C
- Pressure Range: 0.3~100 Bar  
※ ≤20bar with UL certification
- Piping Selection: M10x1 Taper (Standard)  
NPT 1/8", NPT 1/4"  
PT 1/8", PT 1/4"  
G 1/8", G 1/4"
- Contact Model: SPDT
- Substance Protection: IP00
- Pressure Switch Protection: IP65(in NYLON)
- Working expectancy: 1.5X10<sup>8</sup> cycles (in 50 bar)

## Aplus Finetek Sensor, Inc.

California, U.S.  
355 S. Lemon Ave, Suite D, Walnut, CA 91789; Tel : 1 909 598 2488  
Illinois, U.S.  
1741 Industrial Drive, Unit #3, Sterling, IL 61081; Tel : 815-632-3132  
Email: info@aplusfine.com